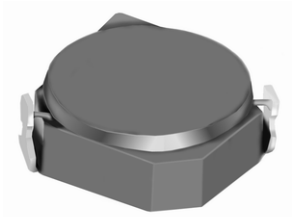
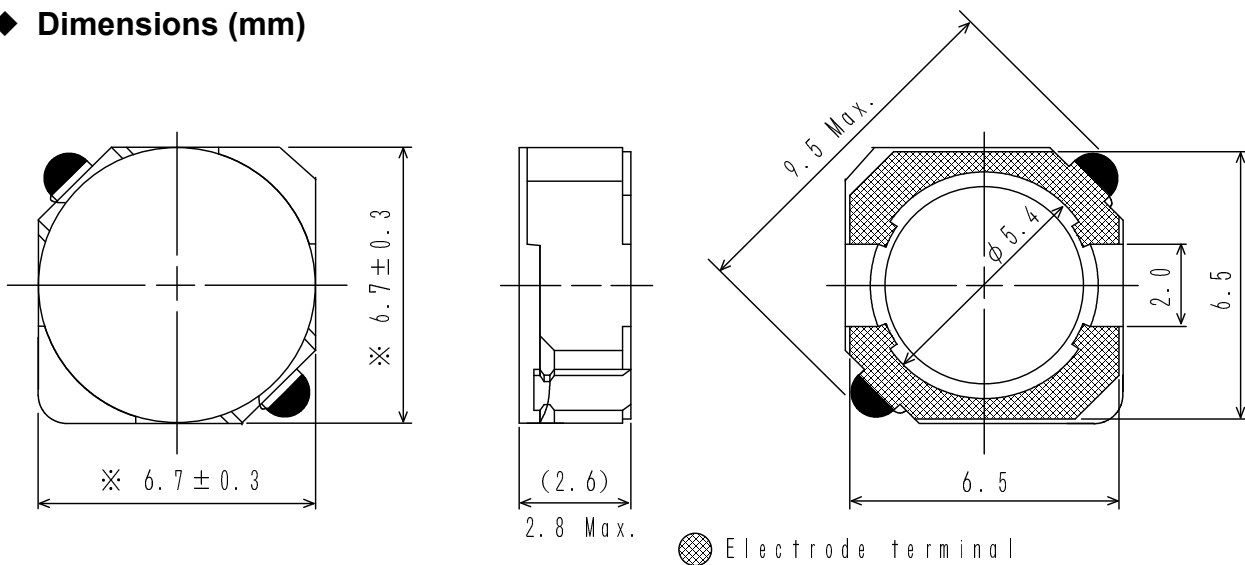
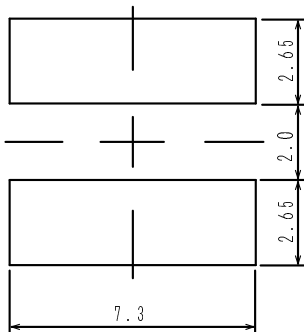


Type: CDRH6D26
◆ Product Description

- 7.0×7.0mm Max.(L×W) , 2.8mm Max. Height.
- Inductance range: 2.2~100 μ H.
- Rated current range: 0.5~3.2A.
- In addition to the standards versions shown here, custom inductors are also available to meet your exact requirements.


◆ Feature

- Magnetically shielded construction.
- Storage temperature range: -40°C~+100°C.
- Operating temperature range: -40°C~+100°C (Including coil's self temperature rise).
- Ideally used in Mobile phone, MP3, PDA ,HDD,DSC/DVC, etc as DC-DC converter inductors.
- RoHS Compliance and Halogen Free.

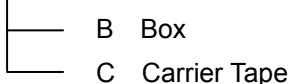
◆ Dimensions (mm)

◆ Land Pattern (mm)


Type: CDRH6D26
◆ Specification

Part Name ※	Stamp	Inductance (μ H) 10kHz/1V	D.C.R.(Ω) Max. (Typ.) (at 20°C)	Rated Current (A) ※1
CDRH6D26NP-2R2N□	2R2	2.2 \pm 30%	22m(16.2m)	3.20
CDRH6D26NP-2R9N□	2R9	2.9 \pm 30%	25m(18.7m)	2.80
CDRH6D26NP-3R6N□	3R6	3.6 \pm 30%	29m(21.3m)	2.50
CDRH6D26NP-5R0N□	5R0	5.0 \pm 30%	32m(23.4m)	2.20
CDRH6D26NP-5R6N□	5R6	5.6 \pm 30%	36m(26.5m)	2.00
CDRH6D26NP-6R8N□	6R8	6.8 \pm 30%	54m(40.0m)	1.80
CDRH6D26NP-8R0N□	8R0	8.0 \pm 30%	60m(44.0m)	1.60
CDRH6D26NP-100N□	100	10 \pm 30%	71m(52.8m)	1.50
CDRH6D26NP-120N□	120	12 \pm 30%	78m(57.4m)	1.30
CDRH6D26NP-150N□	150	15 \pm 30%	106m(78.6m)	1.20
CDRH6D26NP-180N□	180	18 \pm 30%	114m(84.2m)	1.10
CDRH6D26NP-220N□	220	22 \pm 30%	129m(95.4m)	1.00
CDRH6D26NP-270N□	270	27 \pm 30%	185m(136.6m)	0.90
CDRH6D26NP-330N□	330	33 \pm 30%	203m(150.2m)	0.80
CDRH6D26NP-390N□	390	39 \pm 30%	223m(165.2m)	0.75
CDRH6D26NP-470N□	470	47 \pm 30%	300m(221.6m)	0.70
CDRH6D26NP-560N□	560	56 \pm 30%	340m(251.4m)	0.65
CDRH6D26NP-680N□	680	68 \pm 30%	375m(278.4m)	0.58
CDRH6D26NP-820N□	820	82 \pm 30%	490m(364.0m)	0.53
CDRH6D26NP-101N□	101	100 \pm 30%	560m(414.8m)	0.50

※ Description of part name

CDRH6D26NP-2R2N□



※1 Rated current: The DC current at which the inductance decreases to 65% of its nominal value or when $\Delta t=30^{\circ}\text{C}$, whichever is lower ($T_a=20^{\circ}\text{C}$).